

2 Way Medium Power Broadband Combiner

From 20 MHz to 1000 MHz Rated at 500 Watts

TECHNICAL DATA SHEET

AMPC 2 - 500N

AMPC 2 - 500N is a passive 2 way medium Power Broadband RF Combiner with 50 ohm N connectors operating from 20 MHz to 1000 MHz, with a max output power 500W.

AMPC 2 - 500N has been designed to operate in harsh environment. The RF Combiner operates in a temperature range from -55°C to 85°C, with a foot print of 127 x 110 x 40 mm.

Features:

- 20 MHz to 1000 MHz Frequency
- 500 watt max power
- Insertion Loss: < 1 dB
- Phase Balance: ± 2.5 degrees
- Amplitude Balance: ± 0.25 dB
- Isolation: >10 dB

Applications:

- Communications Systems
- Power Combining
- Broadcasting
- Amplifier Systems
- Wireless Infrastructures
- Amplifier Power Combining
- Defence Applications

Configuration:

Input Connectors	N Female
Output Connector	N Female
Frequency Range	20 to 1000 MHz
Design	Reactive
Number of Input Ports	2
Housing Material and Plating	Aluminum Alloy white chromate

Electrical Specifications

Description	Minimum	Typical	Maximum	Units
Frequency Range	20		1000	MHz
Impedance		50		Ohms
Insertion Loss			1	dB
Output Power			500	Watts
Output VSWR			1.3:1	
Isolation	10			dB
Phase Balance		± 2.5		Degrees
Flatness		± 0.25		dB

2 Way Medium Power Broadband Combiner

From 20 MHz to 1000 MHz Rated at 500 Watts

TECHNICAL DATA SHEET

AMPC 2 - 500N

Mechanical Specifications:

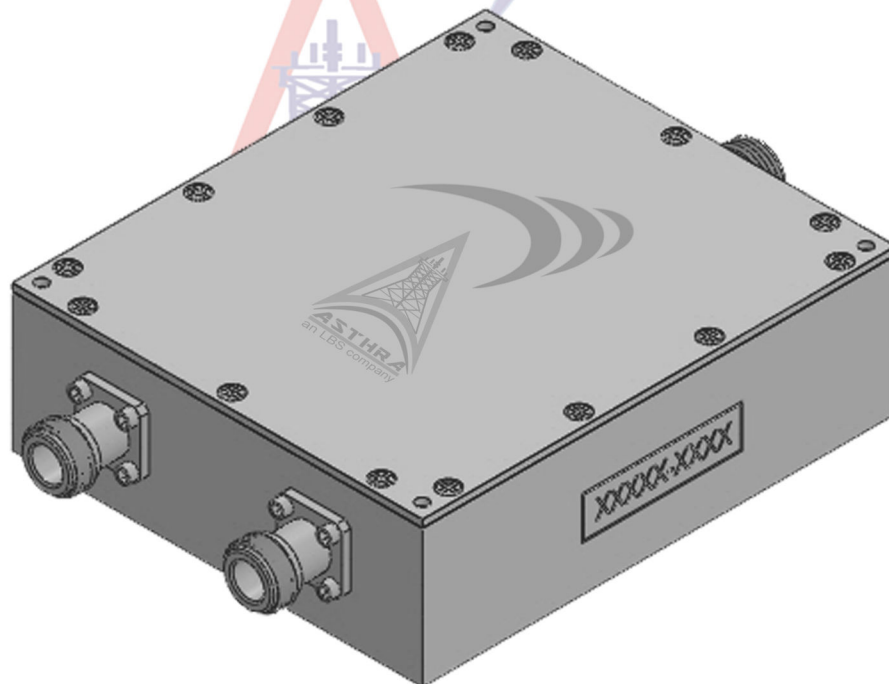
Temperature:

Operating Range -55 to +85 deg C

Size:*

Length 127 mm
Width 110 mm
Height 40 mm

* - Size may vary



ASTHRA PROJECTS

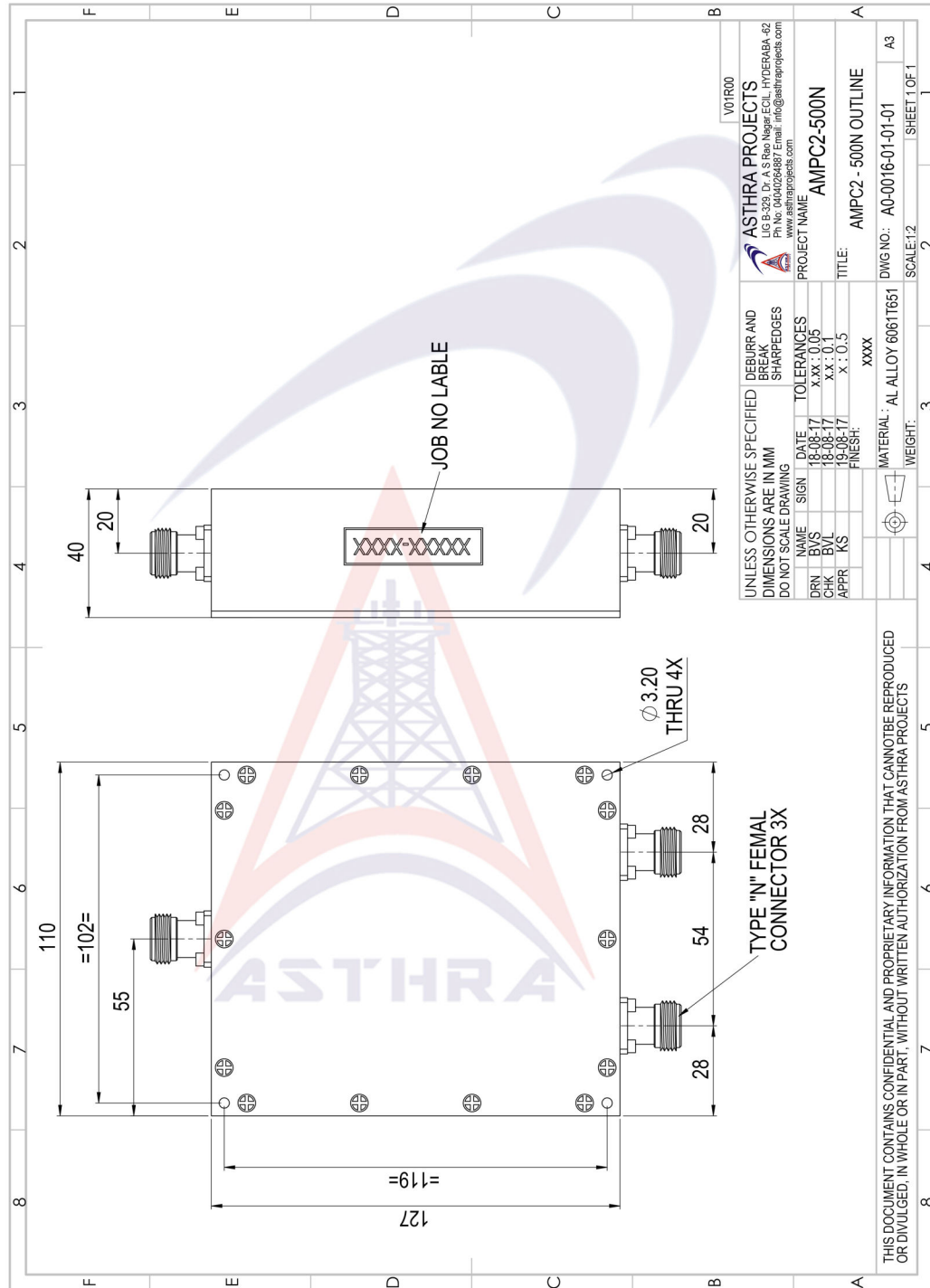
#LIG- B329, Near old HMTV, Dr.A.S.Rao Nagar,
ECIL Post, Hyderabad-500062. Ph: 040-40264887
Mail: info@asthraprojects.com
Web: www.asthraprojects.com

2 Way Medium Power Broadband Combiner

From 20 MHz to 1000 MHz Rated at 500 Watts

TECHNICAL DATA SHEET

AMPC 2 - 500N



ASTHRA PROJECTS

#LIG- B329, Near old HMTV, Dr.A.S.Rao Nagar,
ECIL Post, Hyderabad-500062. Ph: 040-40264887
Mail: info@asthraprojects.com
Web: www.asthraprojects.com